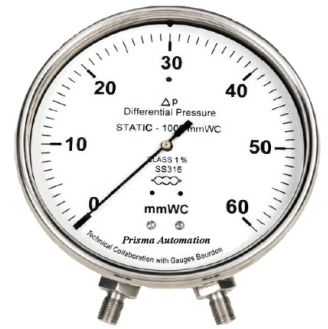


## Differential Pr. Gauges - Bellow Type

**MODEL : DPG-B**

### Features

- Bellow type construction
- Reference Standard: EN - 837
- All SS internals
- Screwed / Flanged connection
- Chemical seal unit (optional) for process suitability
- Accuracy  $\pm 1\%$  FSD
- Microswitch type contacts as required
- A set of two stainless steel bellows mounted on a force balance enables direct reading of the actual differential pressure.
- Each bellow of the pressure Gauge can withstand the full static pressure without any damage or shifting being caused to the instrument.



### Specifications

<b>Dial</b>	6" (150mm)
<b>Case &amp; Bezel</b>	Diecast aluminium / SS304 / SS316, weatherproof to IP-67 (IS:13947 Part 1)
<b>Window</b>	Toughened Glass with rubber ring
<b>Pointer</b>	Light weight, micrometer adjustable
<b>Sensing</b>	Bellow in SS316L
<b>Other wetted parts</b>	SS316 L
<b>Movement</b>	SS304 / SS316
<b>Connection</b>	1/2" NPT (M) as standard (other on request)
<b>Range</b>	Minimum 0 to 1000 mm WC
<b>Static Pressure</b>	Upto 60 kg/cm <sup>2</sup> , Higher Static Pressure on request
<b>Accuracy</b>	$\pm 1\%$ FSD
<b>Blow out disc</b>	Provided (top of the case)
<b>Temperature suitability</b>	(-) 20°C to 80°C
<b>Optional</b>	Chemical seal unit Liquid filled case Microswitch type contacts (5 Amp @ 230 VAC) External zero mechanism

## Ordering Information

### MODEL : DPG-B



#### MOUNTING

- S Bottom Entry, Surface Mounting
- P Back Entry, Panel Mounting
- Y Yoke Mounting (2" pipe mounting)

#### DIAL

15 - 150 mm

#### CASE

- AL Die-cast Aluminium
- S4 SS304
- S6 SS316

#### BELLOW

S6 SS316 L

#### MOVEMENT

- A SS304
- B SS316

#### CONNECTION

SIZE	TYPE	MALE / FEMALE	METRIC THREADS
6 1/4"	NT NPT	M Male	18 M - M 18 x 1.5
10 3/8"	BP BSP	F Female	20 M - M 20 x 1.5
15 1/2"	BT BSPT		24 M - M 24 x 1.5
20 3/4"	PF PF		27 M - M 27 x 2
25 1"	GS Gas		33 M - M 33 x 2
32 1.1/4"	NS NPSM		XX - Any other
40 1.1/2"			

#### OPTION

- CE CE Certificate
- E External zero Adjustment
- G Glycerin Filled Case
- S Silicon Oil Filled Case
- N NACE-MR-01-75
- O O<sub>2</sub> Cleaning
- D Dual Scale
- L Nil
- P 2" Pipe Mounting Bracket
- U Chemical Seal Unit-Refer Catalogue CSU
- X Accessory - Refer Catalogue ACC

#### STATIC PRESSURE

Please Specify

#### UNIT

- A kg/cm<sup>2</sup> (g)
- B Bar (g)
- C Psig
- D KPa
- E mmHg

#### RANGE

Please Specify